



GOLF COURSE MASTER PLAN

Version 2.0 • June 11, 2025

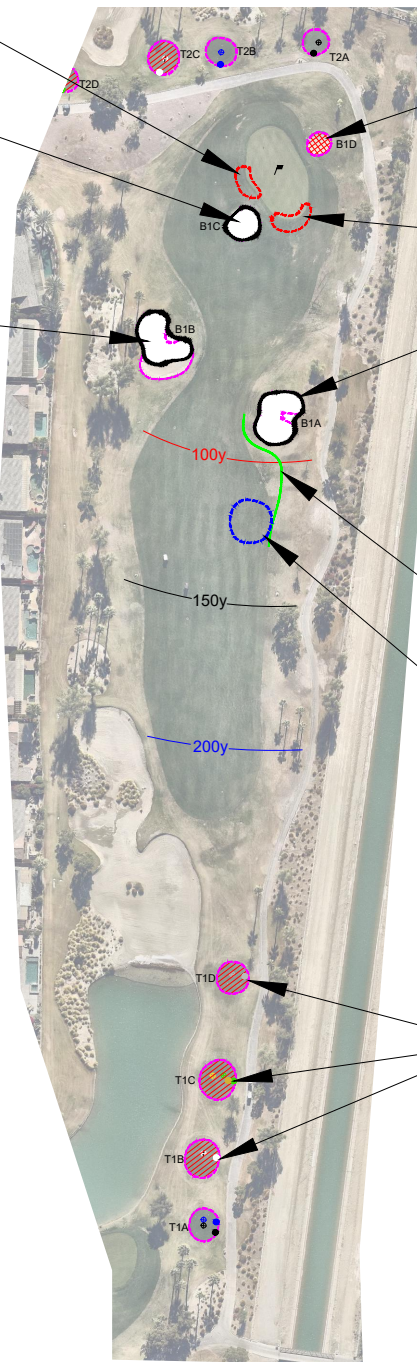
Gary Brawley, American Society of Golf Course Architects

Gary Brawley Golf Design • PO Box 6483 Peoria, Arizona USA 85385 • P: (602) 617-0038 • Email: gary@gbgolfdesign.com

Remove existing collar dam and re-establish positive surface drainage off of green.

Small bunker with big impact. Remove existing sand and liner. Re-establish bunker core. Install new drainage, liner and bunker sand.

Bunker provides a good target for the tee shot, leaving the golfer with a more challenging approach shot into the green. Remove existing sand and liner. Rebuild bunker, using existing top edge. Raise area in front of existing bunker to surface drain away. Re-establish bunker core. Install new drainage, liner and bunker sand.



Bunker should rarely come into play. Remove existing bunker, reshape to have surface water flow to existing basin. Sod limit of disturbance.

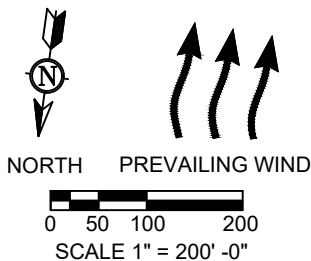
Remove existing collar dam and re-establish positive surface drainage off of green.

Best angle of approach into green is from right side of fairway, challenging this bunker. Remove existing sand and liner. Soften nose in bunker per field direction. Re-establish bunker core. Install new drainage, liner and bunker sand.

Expand fairway "under bunker" leaving golfer with best angle of approach into green.

Regrade area and install new drain basin, connecting to existing basin. Min surface grade to basin at 3%. Sod limit of disturbance.

Remove existing turf and re-level tee surface. Pitch surface at 1%. Purchase and install new sod.



TEE	EXISTING	PROPOSED
Black	368	368
Blue	366	366
White	343	343
Green	316	316
Gold	316	316
Silver	281	281

GOLF COURSE MASTER PLAN

Version 2.0 • June 11, 2025

Gary Brawley, American Society of Golf Course Architects
 Gary Brawley Golf Design • PO Box 6483 Peoria, Arizona USA 85385 • P: (602) 617-0038 • Email: gary@gbgolfdesign.com

Rich Ferrero, American Society of Landscape Architects
 in2IT Studio • 2040 S. Alma School Rd Suite #1-408 • P: (888) 710-1770 • Email: rferrero@in2itstudio.com

HOLE
1
Par 4

Soften nose in bunker per field direction. Remove existing sand and liner. Re-establish bunker core. Install new drainage, liner and bunker sand.

Remove existing collar dam and re-establish positive surface drainage off of green.

Bunker is in the transition zone between shots and only penalizes the high handicap golfer. Remove existing sand and liner to on-site bury pit. Reshape bunker per shaping plan to remove resemblance of existing bunker. Sod limit of disturbance.

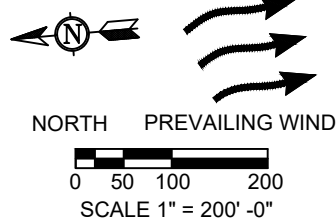
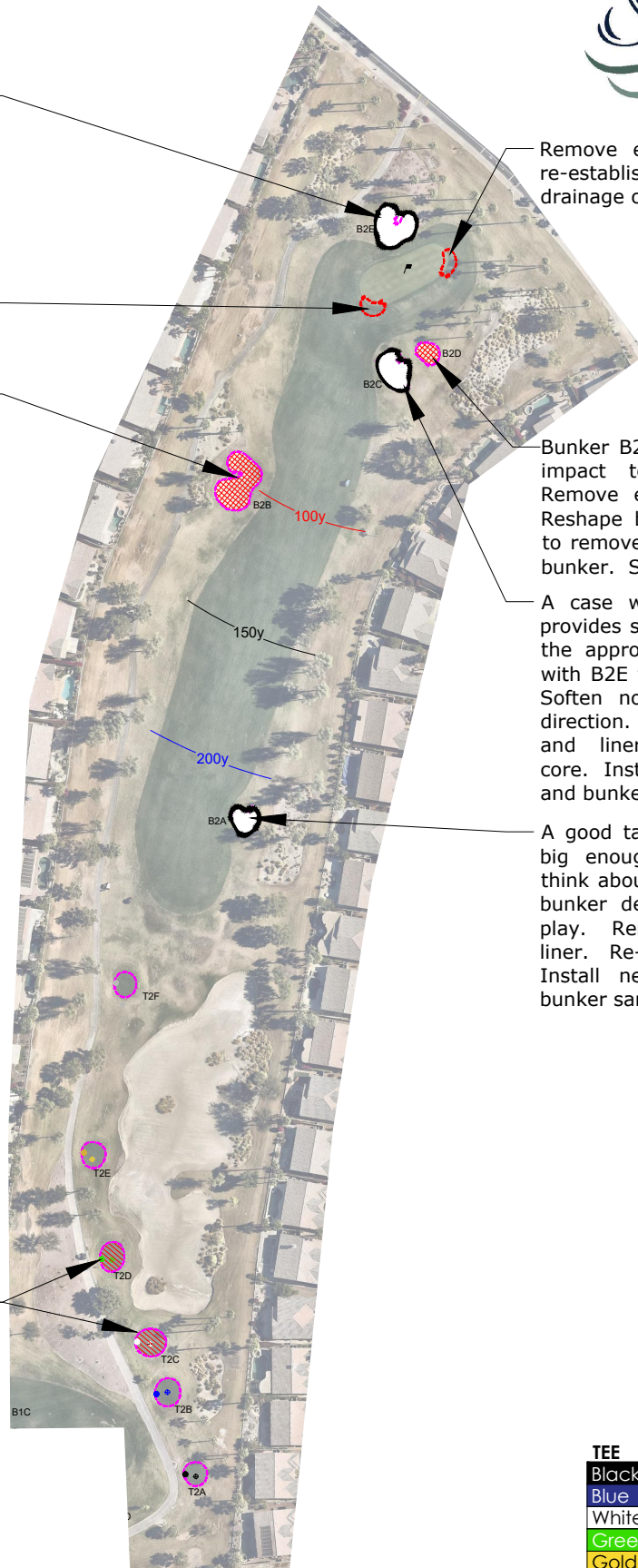
Remove existing collar dam and re-establish positive surface drainage off of green.

Bunker B2C provides the strategic impact to the approach shot. Remove existing sand and liner. Reshape bunker per shaping plan to remove resemblance of existing bunker. Sod limit of disturbance.

A case where the short bunker provides some depth perception to the approach shot and is in line with B2E to provide good balance. Soften nose in bunker per field direction. Remove existing sand and liner. Re-establish bunker core. Install new drainage, liner and bunker sand.

A good target bunker that is just big enough to make the golfer think about their tee shot. Modify bunker depth to improve line of play. Remove existing sand and liner. Re-establish bunker core. Install new drainage, liner and bunker sand.

Remove existing turf and re-level tee surface. Pitch surface at 1%. Purchase and install new sod.



TEE	EXISTING	PROPOSED
Black	476	476
Blue	444	444
White	426	426
Green	396	396
Gold	360	360
Silver	300	293

GOLF COURSE MASTER PLAN

Version 2.0 • June 11, 2025

Gary Brawley, American Society of Golf Course Architects
 Gary Brawley Golf Design • PO Box 6483 Peoria, Arizona USA 85385 • P: (602) 617-0038 • Email: gary@gbgolfdesign.com

Rich Ferrero, American Society of Landscape Architects
 in2IT Studio • 2040 S. Alma School Rd Suite #1-408 • P: (888) 710-1770 • Email: rferrero@in2itstudio.com

HOLE
2
Par 4

Large bunker behind the green in which the majority of golfers will be playing approach with a shorter iron. Removing this bunker and reshaping area to have containment will still gather a ball rolling over the green.

A good bunker defining the landing area for the second shot, leaving the golfers with an option to be aggressive and play over it or short and right with a better angle into the green. Remove some of the noses to improve maintenance efficiencies. Remove existing sand and liner. Re-establish bunker core. Install new drainage, liner and bunker sand.

Existing bunker complex is well positioned for the tee shot, but only B3C really comes into play for the majority of golfers. Remove B3B and B3D and shape area to remove resemblance of existing bunkers. B3C Remove existing sand and liner. Re-establish bunker core. Install new drainage, liner and bunker sand.

Remove existing collar dam and re-establish positive surface drainage off of green.

Remove existing collar dam and re-establish positive surface drainage off of green.

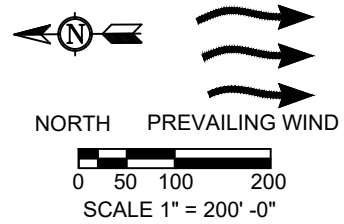
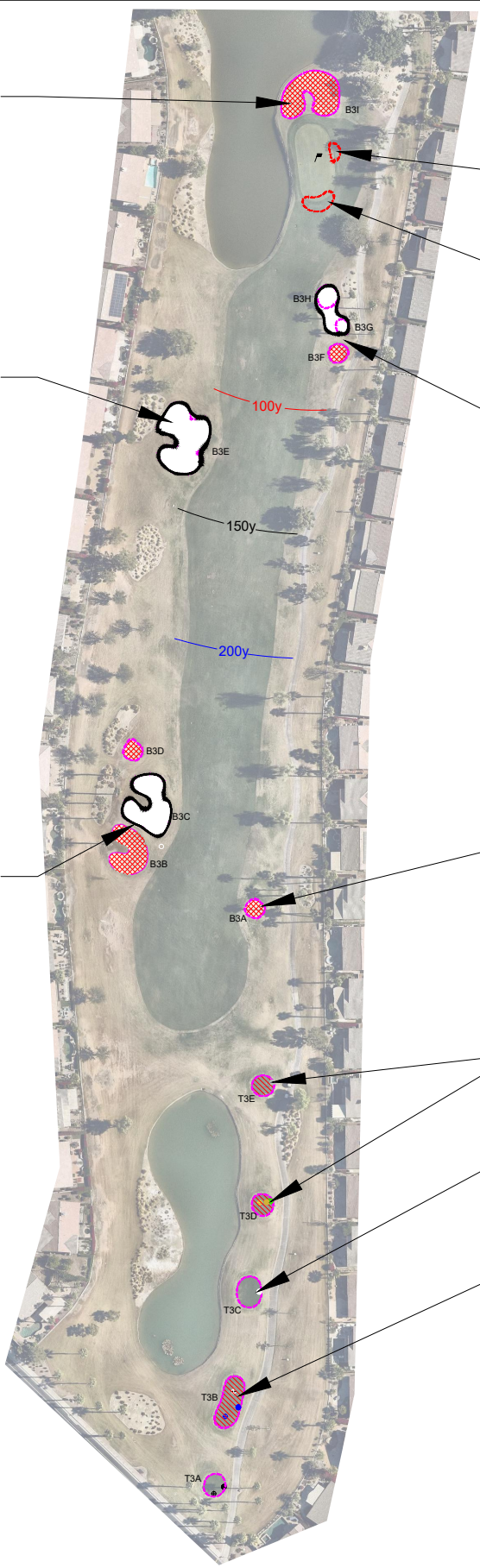
A good bunker complex, defining the end of the fairway and also protecting the best angle of approach into green. One larger bunker in this area would be more consistent with the style and character of the golf course and one of the bunkers could then be eliminated. Remove existing sand and liner. Re-establish bunker core. Install new drainage, liner and bunker sand.

Very similar tee shot to hole 2 and with the length of this par 5 this bunker only really effects the higher handicap golfers. Removing this bunker will ease line of play.

Remove existing turf and re-level tee surface. Pitch surface at 1%. Purchase and install new sod.

Consideration should be given to use this tee for the white tee and provide better separation between blue and white tees (460y).

Remove existing turf and re-level tee surface. Pitch surface at 1%. Purchase and install new sod.



TEE	EXISTING	PROPOSED
Black	539	539
Blue	508	508
White	498	460
Green	423	423
Gold	423	423
Silver	381	376

GOLF COURSE MASTER PLAN

Version 2.0 • June 11, 2025

Gary Brawley, American Society of Golf Course Architects
 Gary Brawley Golf Design • PO Box 6483 Peoria, Arizona USA 85385 • P: (602) 617-0038 • Email: gary@gbgolfdesign.com

Rich Ferrero, American Society of Landscape Architects
 in2it Studio • 2040 S. Alma School Rd Suite #1-408 • P: (888) 710-1770 • Email: rferrero@in2itstudio.com

HOLE
3
Par 5

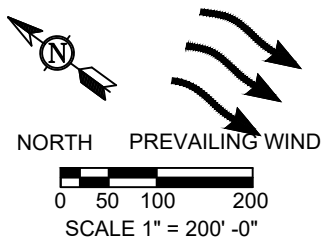
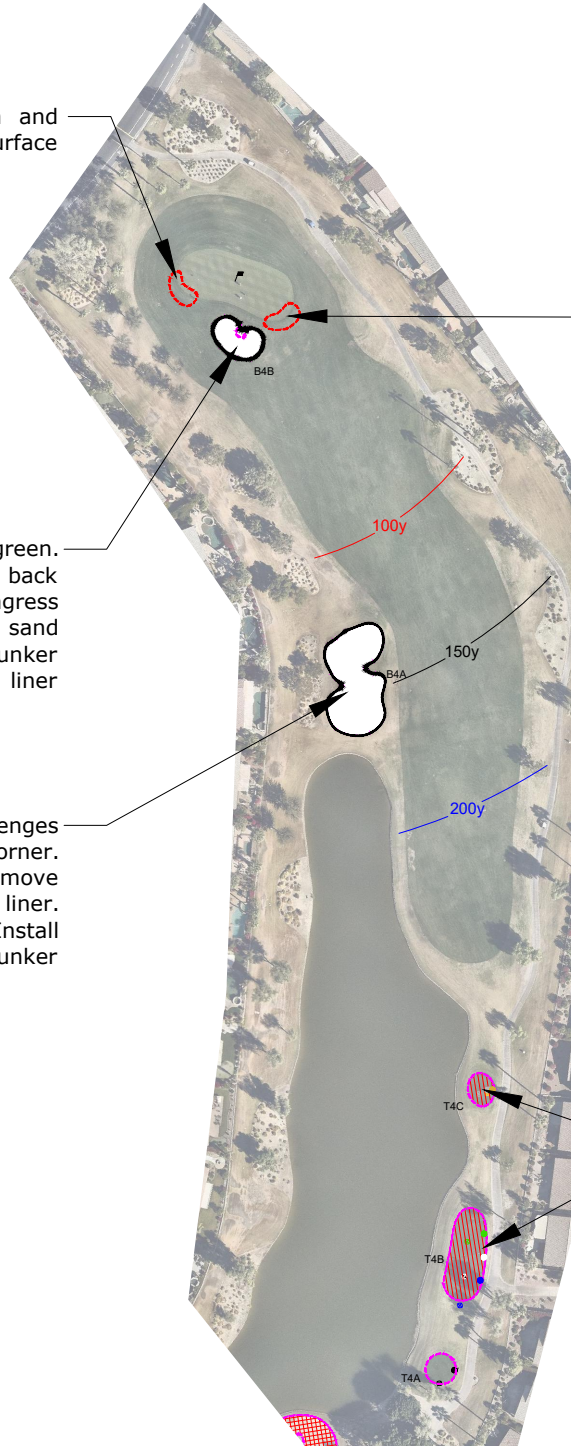
Remove existing collar dam and re-establish positive surface drainage off of green.

Remove existing collar dam and re-establish positive surface drainage off of green.

A good bunker guarding the green. Soften nose. Lower access to back left of bunker to improve ingress and egress. Remove existing sand and liner. Re-establish bunker core. Install new drainage, liner and bunker sand.

Location of bunker challenges golfer trying to cut the corner. Keep bunker in place. Remove existing sand and liner. Re-establish bunker core. Install new drainage, liner and bunker sand.

Remove existing turf and re-level tee surface. Pitch surface at 1%. Purchase and install new sod.



TEE	EXISTING	PROPOSED
Black	403	398
Blue	376	368
White	366	360
Green	354	352
Gold	303	303
Silver	303	303

GOLF COURSE MASTER PLAN

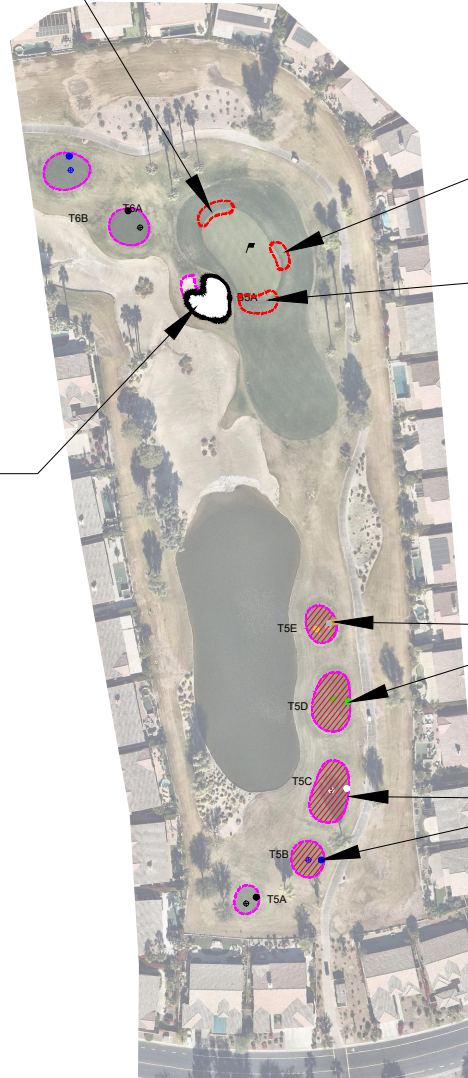
Version 2.0 • June 11, 2025

Gary Brawley, American Society of Golf Course Architects
 Gary Brawley Golf Design • PO Box 6483 Peoria, Arizona USA 85385 • P: (602) 617-0038 • Email: gary@gbgolfdesign.com

Rich Ferrero, American Society of Landscape Architects
 in2IT Studio • 2040 S. Alma School Rd Suite #1-408 • P: (888) 710-1770 • Email: rferrero@in2itstudio.com

HOLE
4
Par 4

Remove existing collar dam and re-establish positive surface drainage off of green.



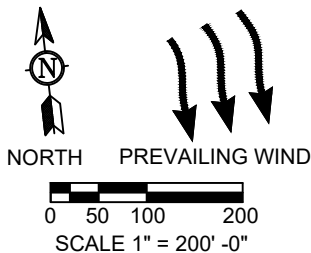
Remove existing collar dam and re-establish positive surface drainage off of green.

Remove existing collar dam and re-establish positive surface drainage off of green.

With angle of the green this bunker comes into play for a majority of the hole locations. The back left portion of the bunker can be removed and filled in. Remove existing sand and liner. Re-establish bunker core. Install new drainage, liner and bunker sand.

Remove existing turf and re-level tee surface. Pitch surface at 1%. Purchase and install new sod.

Remove existing turf and re-level tee surface. Pitch surface at 1%. Purchase and install new sod.



TEE	EXISTING	PROPOSED
Black	226	226
Blue	212	212
White	189	189
Green	158	158
Gold	133	133
Silver	133	133

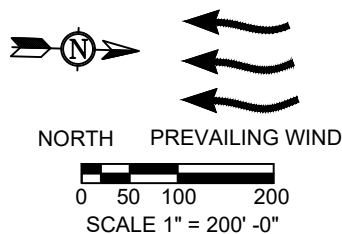
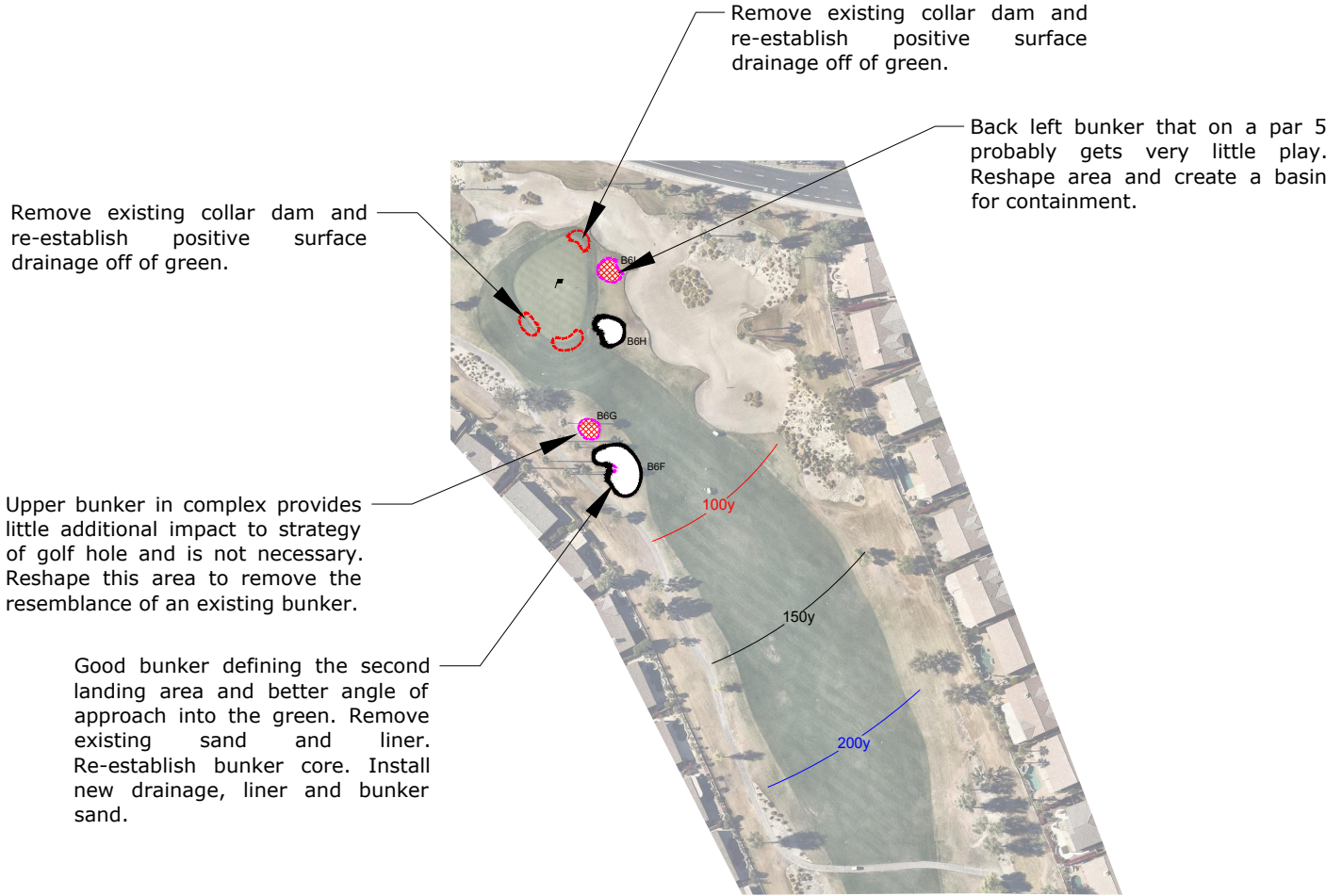
GOLF COURSE MASTER PLAN

Version 2.0 • June 11, 2025

Gary Brawley, American Society of Golf Course Architects
 Gary Brawley Golf Design • PO Box 6483 Peoria, Arizona USA 85385 • P: (602) 617-0038 • Email: gary@gbgolfdesign.com

Rich Ferrero, American Society of Landscape Architects
 in2IT Studio • 2040 S. Alma School Rd Suite #1-408 • P: (888) 710-1770 • Email: rferrero@in2itstudio.com

HOLE
5
 Par 3



TEE	EXISTING	PROPOSED
Black	564	564
Blue	544	544
White	522	522
Green	480	480
Gold	480	480
Silver	410	410

GOLF COURSE MASTER PLAN

Version 2.0 • June 11, 2025

Gary Brawley, American Society of Golf Course Architects
 Gary Brawley Golf Design • PO Box 6483 Peoria, Arizona USA 85385 • P: (602) 617-0038 • Email: gary@gbgolfdesign.com

Rich Ferrero, American Society of Landscape Architects
 in2IT Studio • 2040 S. Alma School Rd Suite #1-408 • P: (888) 710-1770 • Email: rferrero@in2itstudio.com

HOLE
6
 Par 5

Regrade area and install new drain basin, connecting to existing basin. Min surface grade to basin at 3%. Sod limit of disturbance.

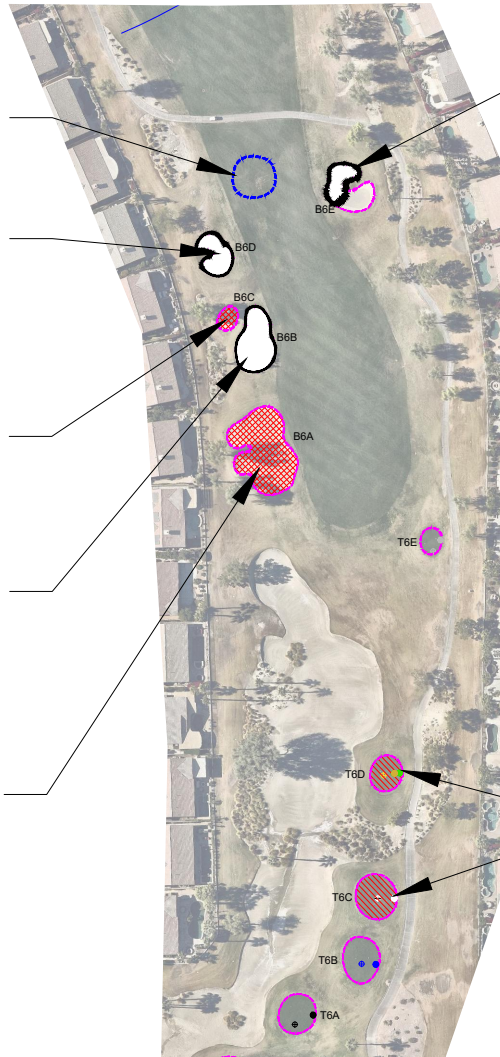
A good bunker, protecting the inside of the dogleg, keeping the golfer honest on their tee shot. Remove existing sand and liner. Re-establish bunker core. Install new drainage, liner and bunker sand.

A small bunker that provides very little to the strategy of the tee shot. Reshape this area to remove the resemblance of an existing bunker.

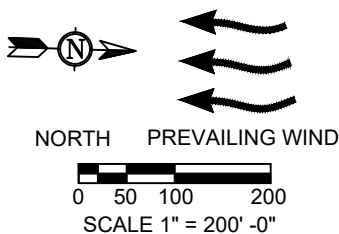
A good bunker, protecting the inside of the dogleg for the majority of the golfers. Remove existing sand and liner. Re-establish bunker core. Install new drainage, liner and bunker sand.

A very large bunker with very little strategic impact to the tee shot with B6B and B6D much more impactful. Reshape this area to remove the resemblance of an existing bunker.

Bunker complements the left bunkers, defining the primary landing area for the tee shot. Filling in the front right portion will make the bunker a little smaller and maintaining the challenge for the tee shot. Remove existing sand and liner. Re-establish bunker core. Install new drainage, liner and bunker sand.



Remove existing turf and re-level tee surface. Pitch surface at 1%. Purchase and install new sod.



TEE	EXISTING	PROPOSED
Black	564	564
Blue	544	544
White	522	522
Green	480	480
Gold	480	480
Silver	410	410

GOLF COURSE MASTER PLAN

Version 2.0 • June 11, 2025

Gary Brawley, American Society of Golf Course Architects
 Gary Brawley Golf Design • PO Box 6483 Peoria, Arizona USA 85385 • P: (602) 617-0038 • Email: gary@gbgolfdesign.com

Rich Ferrero, American Society of Landscape Architects
 in2IT Studio • 2040 S. Alma School Rd Suite #1-408 • P: (888) 710-1770 • Email: rferrero@in2itstudio.com

HOLE
6
 Par 5

Back bunkers are not really visible from the tee and provide very little to the playability of the golf hole. Reshape complex to remove resemblance of bunker, adding a drain basin(s) if necessary.

Remove existing collar dam and re-establish positive surface drainage off of green.

Remove existing collar dam and re-establish positive surface drainage off of green.

A good bunker protecting the left side of the green. Bunker can be expanded to fit into space better. Remove existing sand and liner. Re-establish bunker core. Install new drainage, liner and bunker sand.

A large iconic bunker that is not only visible for the golfers, but also community residents driving along the street. Remove existing sand and liner. Re-establish bunker core. Install new drainage, liner and bunker sand..

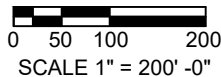
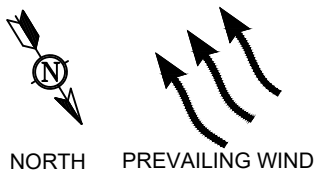
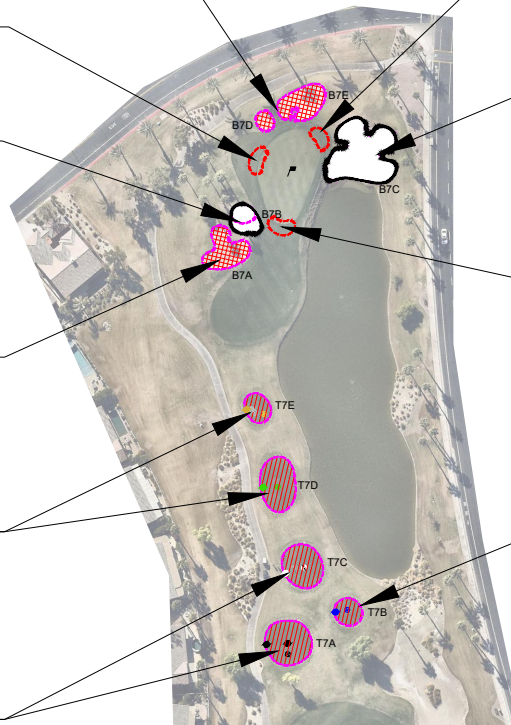
Remove existing collar dam and re-establish positive surface drainage off of green.

Location of bunker away from green has very little strategic impact and leaves an extremely difficult recovery shot. Reshape this area to remove the resemblance of an existing bunker.

Remove existing turf and re-level tee surface. Pitch surface at 1%. Purchase and install new sod.

Remove existing turf and re-level tee surface. Pitch surface at 1%. Purchase and install new sod.

Remove existing turf and re-level tee surface. Pitch surface at 1%. Purchase and install new sod.



TEE	EXISTING	PROPOSED
Black	166	166
Blue	152	152
White	136	136
Green	108	108
Gold	83	83
Silver	83	83

GOLF COURSE MASTER PLAN

Version 2.0 • June 11, 2025

Gary Brawley, American Society of Golf Course Architects
 Gary Brawley Golf Design • PO Box 6483 Peoria, Arizona USA 85385 • P: (602) 617-0038 • Email: gary@gbgolfdesign.com

Rich Ferrero, American Society of Landscape Architects
 in2it Studio • 2040 S. Alma School Rd Suite #1-408 • P: (888) 710-1770 • Email: rferrero@in2itstudio.com

HOLE
7
Par 3

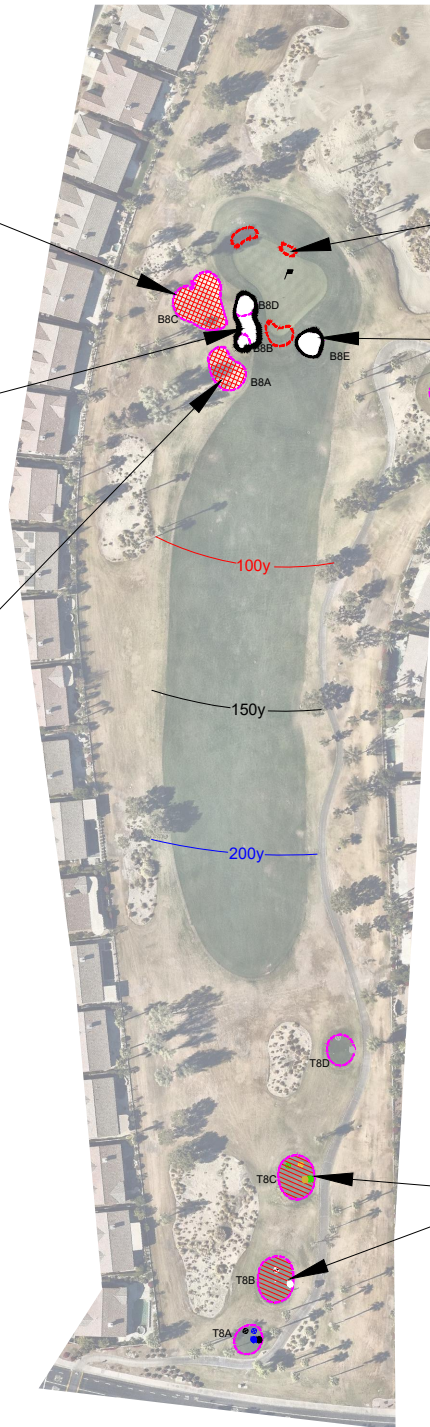
A very large bunker with very little strategic impact to the approach shot into the green due to the distance from the green. Reshape this area to remove the resemblance of an existing bunker.

Reshape this area and build one bunker protecting the left side of the green. The linear shape of the bunker will provide some deception as to the depth of the approach shot. Remove existing sand and liner. Re-establish bunker core. Install new drainage, liner and bunker sand.

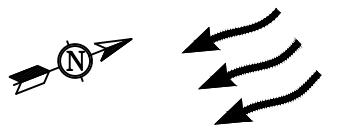
A very large bunker with very little strategic impact to the approach shot into the green due to the distance from the green. Reshape this area to remove the resemblance of an existing bunker.

Remove existing collar dam and re-establish positive surface drainage off of green.

On a short par 4, the bunkers around the green protect the short approach shot. Raise the floor of this bunker. Remove existing sand and liner. Re-establish bunker core. Install new drainage, liner and bunker sand.



Remove existing turf and re-level tee surface. Pitch surface at 1%. Purchase and install new sod.



NORTH PREVAILING WIND



SCALE 1" = 200' -0"

TEE	EXISTING	PROPOSED
Black	366	366
Blue	366	366
White	345	345
Green	309	309
Gold	309	309
Silver	267	267

GOLF COURSE MASTER PLAN

Version 2.0 • June 11, 2025

Gary Brawley, American Society of Golf Course Architects
 Gary Brawley Golf Design • PO Box 6483 Peoria, Arizona USA 85385 • P: (602) 617-0038 • Email: gary@gbgolfdesign.com

Rich Ferrero, American Society of Landscape Architects
 in2it Studio • 2040 S. Alma School Rd Suite #1-408 • P: (888) 710-1770 • Email: rferrero@in2itstudio.com

HOLE
8
Par 4



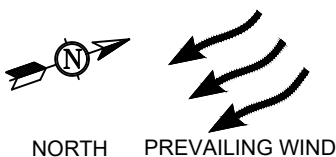
Remove existing collar dam and re-establish positive surface drainage off of green.

A good bunker to keep the golfer honest that is playing their approach shot away from the water. Expand the bunker to the west to increase the amount of playable space in the floor of the bunker. Remove existing sand and liner. Re-establish bunker core. Install new drainage, liner and bunker sand.

With the challenge of this hole being primarily on the approach shot, this bunker does protect the right side of the fairway which is the more desired angle of play. Filling in the front right portion will make the bunker a little smaller and maintaining the challenge for the tee shot. Remove existing sand and liner. Re-establish bunker core. Install new drainage, liner and bunker sand.

Remove existing turf and re-level tee surface. Pitch surface at 1%. Purchase and install new sod.

Remove existing turf and re-level tee surface. Pitch surface at 1%. Purchase and install new sod.



0 50 100 200
SCALE 1" = 200' -0"

GOLF COURSE MASTER PLAN

Version 2.0 • June 11, 2025

Gary Brawley, American Society of Golf Course Architects
Gary Brawley Golf Design • PO Box 6483 Peoria, Arizona USA 85385 • P: (602) 617-0038 • Email: gary@gbgolfdesign.com

Rich Ferrero, American Society of Landscape Architects
in2IT Studio • 2040 S. Alma School Rd Suite #1-408 • P: (888) 710-1770 • Email: rferrero@in2itstudio.com

TEE	EXISTING	PROPOSED
Black	451	451
Blue	427	427
White	396	396
Green	366	366
Gold	321	321
Silver	321	321

HOLE
9
Par 4

An extremely oversized bunker that effects pace of play and golfer access to the green. Reshape area and build 2 bunkers adjacent to the green. Add drainage as necessary. Remove existing sand and liner. Re-establish bunker core. Install new drainage, liner and bunker sand.

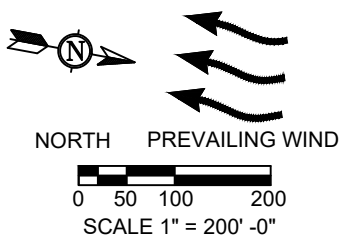
Remove existing collar dam and re-establish positive surface drainage off of green.

Maybe one of the most played out of bunkers on the golf course. Lower sand build up between bunker and green and raise floor of bunker. Remove existing sand and liner. Re-establish bunker core. Install new drainage, liner and bunker sand.

A very penal bunker, not only due to the depth but also the trees that block out an approach shot. Reshape bunker per shaping plan to remove resemblance of existing bunker. Sod limit of disturbance.

Bunker defines the primary landing area for the tee shot and should remain. Remove existing sand and liner. Re-establish bunker core. Install new drainage, liner and bunker sand.

Remove existing turf and re-level tee surface. Pitch surface at 1%. Purchase and install new sod.



TEE	EXISTING	PROPOSED
Black	430	430
Blue	397	388
White	377	377
Green	338	338
Gold	338	338
Silver	305	305

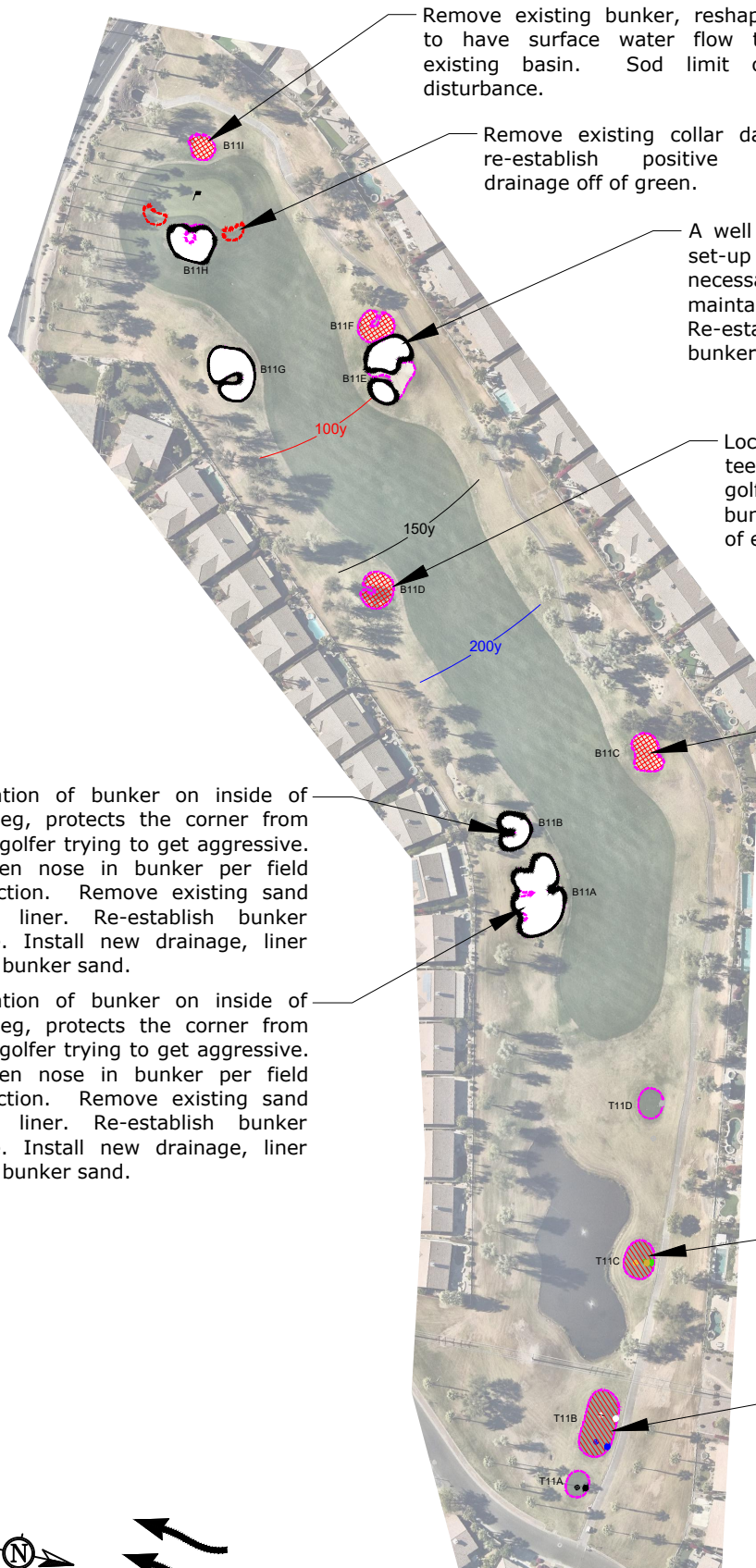
GOLF COURSE MASTER PLAN

Version 2.0 • June 11, 2025

Gary Brawley, American Society of Golf Course Architects
 Gary Brawley Golf Design • PO Box 6483 Peoria, Arizona USA 85385 • P: (602) 617-0038 • Email: gary@gbgolfdesign.com

Rich Ferrero, American Society of Landscape Architects
 in2it Studio • 2040 S. Alma School Rd Suite #1-408 • P: (888) 710-1770 • Email: rferrero@in2itstudio.com

HOLE
10
 Par 4



Remove existing bunker, reshape to have surface water flow to existing basin. Sod limit of disturbance.

Remove existing collar dam and re-establish positive surface drainage off of green.

A well positioned bunker complex along with B11G to set-up positioning of lay-up shot. Upper bunker is not necessary. Break larger bunker into two bunkers and maintain character. Remove existing sand and liner. Re-establish bunker core. Install new drainage, liner and bunker sand.

Location of bunker is in the transition area between the tee shot and secondary landing area for the majority of golfers and probably gets very little play. Remove bunker and reshape surrounds to remove resemblance of existing bunker. Sod limit of disturbance.

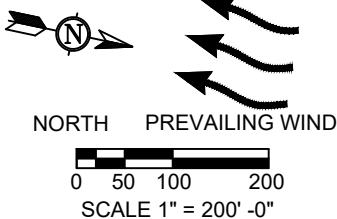
A very penal bunker that sits outside the primary landing area for the majority of golfers. Existing tree line does a good job helping direct the hole direction. Remove bunker and reshape surrounds to remove resemblance of existing bunker. Sod limit of disturbance.

Location of bunker on inside of dogleg, protects the corner from the golfer trying to get aggressive. Soften nose in bunker per field direction. Remove existing sand and liner. Re-establish bunker core. Install new drainage, liner and bunker sand.

Location of bunker on inside of dogleg, protects the corner from the golfer trying to get aggressive. Soften nose in bunker per field direction. Remove existing sand and liner. Re-establish bunker core. Install new drainage, liner and bunker sand.

Remove existing turf and re-level tee surface. Pitch surface at 1%. Purchase and install new sod.

Remove existing turf and re-level tee surface. Pitch surface at 1%. Purchase and install new sod.



TEE	EXISTING	PROPOSED
Black	528	528
Blue	511	511
White	501	501
Green	445	445
Gold	445	445
Silver	400	388

GOLF COURSE MASTER PLAN

Version 2.0 • June 11, 2025

Gary Brawley, American Society of Golf Course Architects
 Gary Brawley Golf Design • PO Box 6483 Peoria, Arizona USA 85385 • P: (602) 617-0038 • Email: gary@gbgolfdesign.com

Rich Ferrero, American Society of Landscape Architects
 in2it Studio • 2040 S. Alma School Rd Suite #1-408 • P: (888) 710-1770 • Email: rferrero@in2itstudio.com

HOLE
11
Par 5

Remove existing collar dam and re-establish positive surface drainage off of green.

Fill in back portion of bunker to provide better access into balance of bunker. Create basin for containment. Remove existing sand and liner. Re-establish bunker core. Install new drainage, liner and bunker sand.

Remove existing turf and re-level tee surface. Pitch surface at 1%. Purchase and install new sod.

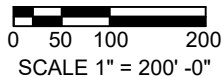
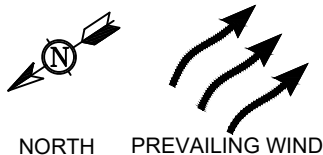


Besides a visual impact, another back bunker that rarely comes into play. Remove existing bunker and reshape surrounds, removing the resemblance of a bunker. Sod limit of disturbance.

Remove existing collar dam and re-establish positive surface drainage off of green.

Lower bunker has the most impact to the golf hole. Remove upper bunker and reshape surrounds, removing the resemblance of a bunker. Sod limit of disturbance. Remove existing sand and liner. Re-establish bunker core. Install new drainage, liner and bunker sand.

Remove existing turf and re-level tee surface. Pitch surface at 1%. Purchase and install new sod.



TEE	EXISTING	PROPOSED
Black	161	161
Blue	148	148
White	128	128
Green	111	111
Gold	111	111
Silver	92	92

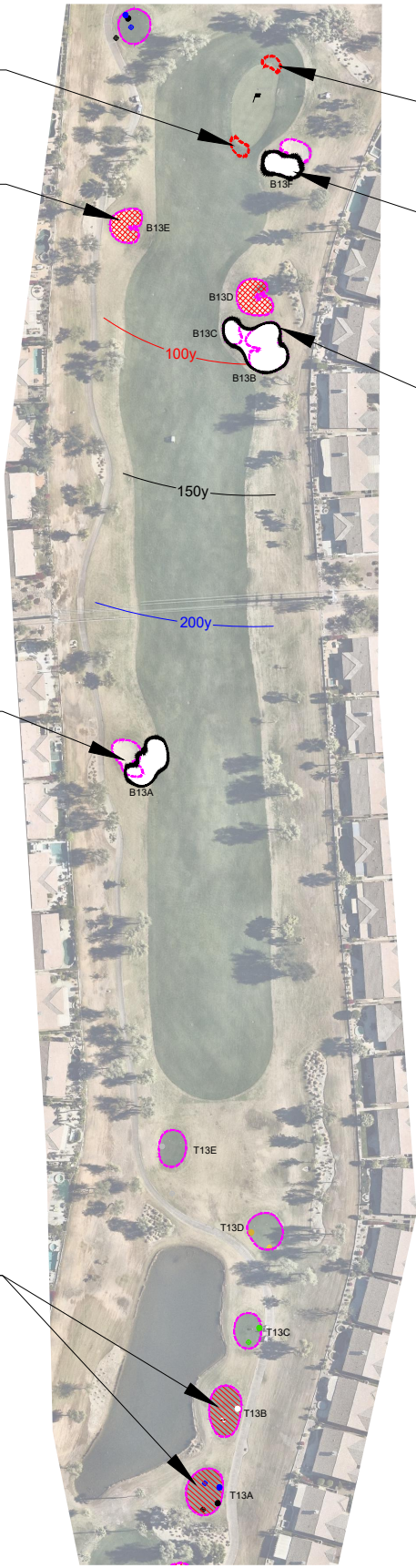
GOLF COURSE MASTER PLAN

Version 2.0 • June 11, 2025

Gary Brawley, American Society of Golf Course Architects
 Gary Brawley Golf Design • PO Box 6483 Peoria, Arizona USA 85385 • P: (602) 617-0038 • Email: gary@gbgolfdesign.com

Rich Ferrero, American Society of Landscape Architects
 in2IT Studio • 2040 S. Alma School Rd Suite #1-408 • P: (888) 710-1770 • Email: rferrero@in2itstudio.com

HOLE
12
 Par 3



Remove existing collar dam and re-establish positive surface drainage off of green.

Position of bunker has very little impact on the strategy of the golf hole with golfers favoring the center and right side of this hole. Remove existing bunker and re-shape the surrounds to remove any resemblance of existing bunker.

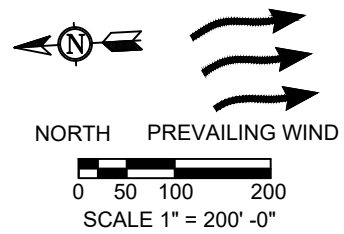
Remove existing collar dam and re-establish positive surface drainage off of green.

Bunker protects green from approach shot, but could be made slightly smaller and still impact shot. Remove existing sand and liner. Re-establish bunker core. Install new drainage, liner and bunker sand.

Good position for a bunker on a par 5 but three bunkers are not needed. Remove the upper bunker and combine the bottom two bunkers. Remove existing sand and liner. Re-establish bunker core. Install new drainage, liner and bunker sand.

This bunker would be more impactful if it was moved down the slope, closer to the fairway line and rebuilt. Remove existing sand and liner. Establish bunker core. Install new drainage, liner and bunker sand.

Remove existing turf and re-level tee surface. Pitch surface at 1%. Purchase and install new sod.



TEE	EXISTING	PROPOSED
Black	540	540
Blue	530	530
White	506	506
Green	477	477
Gold	422	435
Silver	420	403

GOLF COURSE MASTER PLAN

Version 2.0 • June 11, 2025

Gary Brawley, American Society of Golf Course Architects
 Gary Brawley Golf Design • PO Box 6483 Peoria, Arizona USA 85385 • P: (602) 617-0038 • Email: gary@gbgolfdesign.com

Rich Ferrero, American Society of Landscape Architects
 in2IT Studio • 2040 S. Alma School Rd Suite #1-408 • P: (888) 710-1770 • Email: rferrero@in2itstudio.com

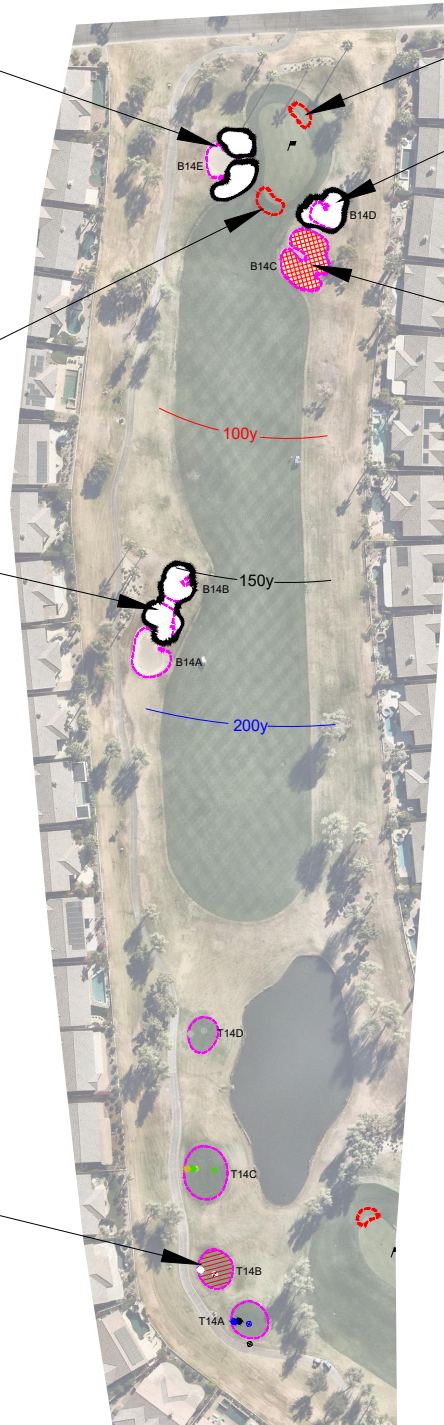
HOLE
13
Par 5

A very large bunker that could be broken into 2 bunkers and achieve same impact to playability of the golf hole and also improve access and maintenance. Remove existing sand and liner. Re-establish bunker core. Install new drainage, liner and bunker sand.

Remove existing collar dam and re-establish positive surface drainage off of green.

Two bunkers with B14B the most important relative to the impact to the tee shot. Combining the back side of B14A into B14B will make this bunker challenging for all golfers. Remove existing sand and liner. Re-establish bunker core. Install new drainage, liner and bunker sand.

Remove existing turf and re-level tee surface. Pitch surface at 1%. Purchase and install new sod.



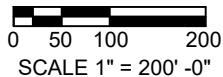
Remove existing collar dam and re-establish positive surface drainage off of green.

Bunker position is good for guarding the right side of this green. Bunker could be expanded short and left of the green with the removal of B14C. Remove existing sand and liner. Re-establish bunker core. Install new drainage, liner and bunker sand.

One of the more penal bunkers on the golf course, effecting the higher handicap player the most. B14D does a good job protecting the approach shot. Remove this bunker, re-shape the surrounds to remove resemblance of a bunker. Add drainage if necessary. Sod limit of disturbance.



NORTH PREVAILING WIND



TEE	EXISTING	PROPOSED
Black	415	408
Blue	408	408
White	391	391
Green	355	355
Gold	355	355
Silver	307	307

GOLF COURSE MASTER PLAN

Version 2.0 • June 11, 2025

Gary Brawley, American Society of Golf Course Architects
 Gary Brawley Golf Design • PO Box 6483 Peoria, Arizona USA 85385 • P: (602) 617-0038 • Email: gary@gbgolfdesign.com

Rich Ferrero, American Society of Landscape Architects
 in2IT Studio • 2040 S. Alma School Rd Suite #1-408 • P: (888) 710-1770 • Email: rferrero@in2itstudio.com

HOLE
14
 Par 4

Final bunker in string of bunkers defining this golf hole and also protects back middle and left hole locations.. Remove existing sand and liner. Re-establish bunker core. Install new drainage, liner and bunker sand.

Remove existing collar dam and re-establish positive surface drainage off of green.

The most important bunker on the golf hole. Move bunker closer to green (8') and raise floor of bunker. Remove existing sand and liner. Re-establish bunker core. Install new drainage, liner and bunker sand.

Bunker helps define landing area for golfer positioning their ball for the approach. Soften noses in bunker per field direction. Remove existing sand and liner. Re-establish bunker core. Install new drainage, liner and bunker sand.

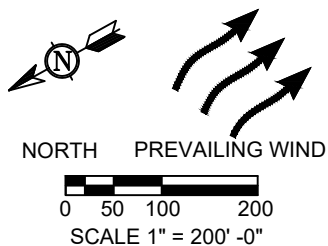
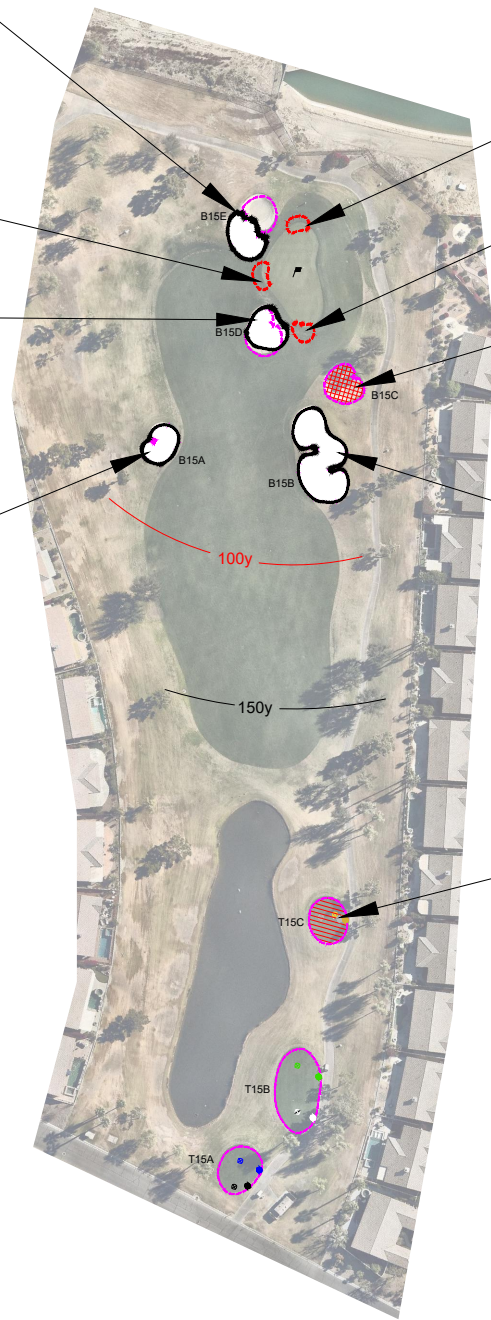
Remove existing collar dam and re-establish positive surface drainage off of green.

Remove existing collar dam and re-establish positive surface drainage off of green.

DISCUSS????

Bunker keeps most golfers honest and forces them to play safe shot to middle of fairway. Remove existing sand and liner. Re-establish bunker core. Install new drainage, liner and bunker sand.

Remove existing turf and re-level tee surface. Pitch surface at 1%. Purchase and install new sod.



TEE	EXISTING	PROPOSED
Black	320	320
Blue	311	311
White	295	295
Green	279	279
Gold	229	229
Silver	229	229

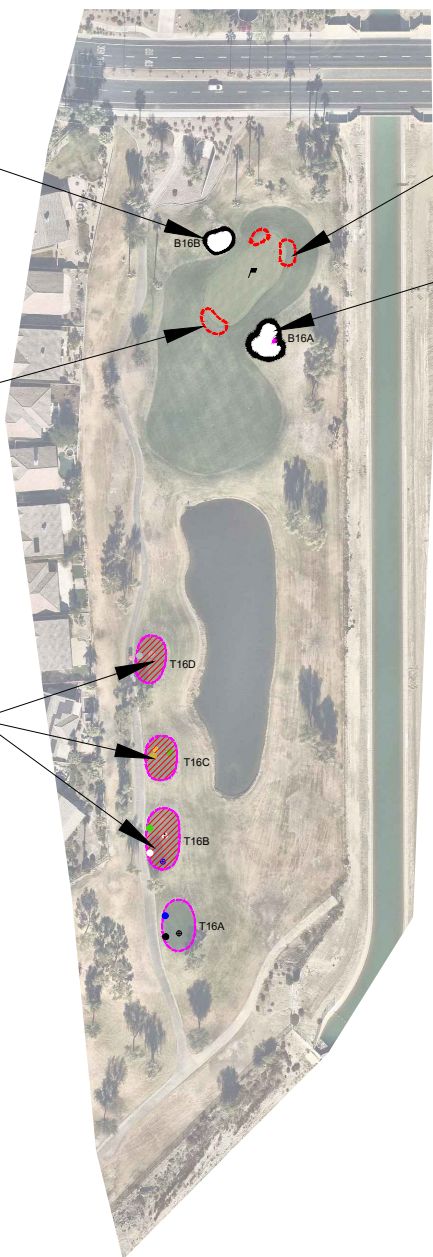
GOLF COURSE MASTER PLAN

Version 2.0 • June 11, 2025

Gary Brawley, American Society of Golf Course Architects
 Gary Brawley Golf Design • PO Box 6483 Peoria, Arizona USA 85385 • P: (602) 617-0038 • Email: gary@gbgolfdesign.com

Rich Ferrero, American Society of Landscape Architects
 in2it Studio • 2040 S. Alma School Rd Suite #1-408 • P: (888) 710-1770 • Email: rferrero@in2itstudio.com

HOLE
15
 Par 4



Along with B16A this bunker provides good balance to the golf hole. Remove existing sand and liner. Re-establish bunker core. Install new drainage, liner and bunker sand.

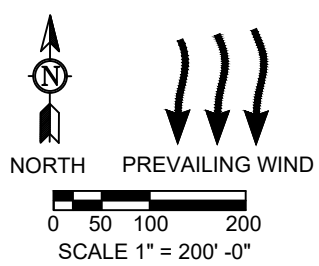
Remove existing collar dam and re-establish positive surface drainage off of green.

Well placed bunker comes into play for all golfers. Remove existing sand and liner. Re-establish bunker core. Install new drainage, liner and bunker sand.

Remove existing collar dam and re-establish positive surface drainage off of green.

Remove existing turf and re-level tee surface. Pitch surface at 1%. Purchase and install new sod.

Redistribution of tees will help with wear on these tees and improve playing conditions during the season. Move the blue marker back to the black tee. Move white back slightly to accommodate green tee moving back with white tee.



TEE	EXISTING	PROPOSED
Black	229	231
Blue	205	223
White	196	203
Green	167	194
Gold	167	167
Silver	135	135

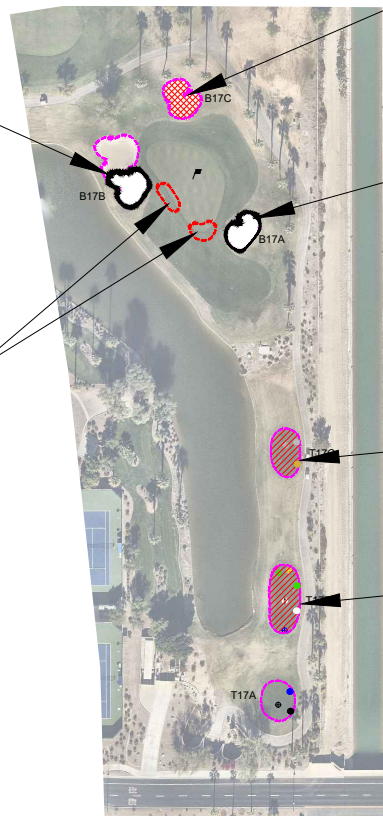
GOLF COURSE MASTER PLAN

Version 2.0 • June 11, 2025

Gary Brawley, American Society of Golf Course Architects
 Gary Brawley Golf Design • PO Box 6483 Peoria, Arizona USA 85385 • P: (602) 617-0038 • Email: gary@gbgolfdesign.com

Rich Ferrero, American Society of Landscape Architects
 in2it Studio • 2040 S. Alma School Rd Suite #1-408 • P: (888) 710-1770 • Email: rferrero@in2itstudio.com

HOLE
16
 Par 3



Bunker protects back left hole locations and also contains tee shot that just misses the green from going into the lake. Back portion of the bunker is not necessary. Remove existing sand and liner. Re-establish bunker core. Install new drainage, liner and bunker sand.

Remove existing collar dam and re-establish positive surface drainage off of green.

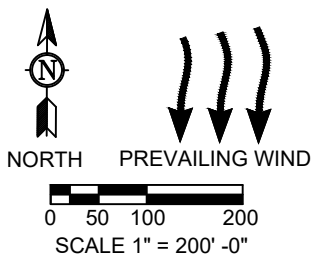
Back bunker with little impact to the playability of the golf hole. Remove bunker, adding drainage if necessary. Sod limit of disturbance.

Location of bunker comes into play for the majority of the golfers. Soften build up of sand between bunker and green. Remove existing sand and liner. Re-establish bunker core. Install new drainage, liner and bunker sand.

Remove existing turf and re-level tee surface. Pitch surface at 1%. Purchase and install new sod.

Remove existing turf and re-level tee surface. Pitch surface at 1%. Purchase and install new sod.

Redistribution of tees will help with wear on these tees and improve playing conditions during the season. Move the blue marker back to the black tee. Move white back slightly to provide more room for green tee. Move gold tee up to silver tee box.



TEE	EXISTING	PROPOSED
Black	185	188
Blue	160	181
White	150	154
Green	140	146
Gold	140	105
Silver	98	95

GOLF COURSE MASTER PLAN

Version 2.0 • June 11, 2025

Gary Brawley, American Society of Golf Course Architects
 Gary Brawley Golf Design • PO Box 6483 Peoria, Arizona USA 85385 • P: (602) 617-0038 • Email: gary@gbgolfdesign.com

Rich Ferrero, American Society of Landscape Architects
 IN2IT Studio • 2040 S. Alma School Rd Suite #1-408 • P: (888) 710-1770 • Email: rferrero@in2itstudio.com

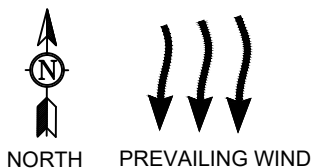
HOLE
17
Par 3

Remove existing collar dam and re-establish positive surface drainage off of green.



A good back bunker that contains an approach shot going over the green and also is highly visible from the clubhouse and restaurant, showing the character of the golf course. Remove existing sand and liner. Re-establish bunker core. Install new drainage, liner and bunker sand.

Location of bunker plays into the strategy of the approach shot and also helps contain the short right miss. Remove existing sand and liner. Re-establish bunker core. Install new drainage, liner and bunker sand.



0 50 100 200
SCALE 1" = 200' -0"

TEE	EXISTING	PROPOSED
Black	422	422
Blue	402	402
White	396	396
Green	368	368
Gold	368	368
Silver	330	330

GOLF COURSE MASTER PLAN

Version 2.0 • June 11, 2025

Gary Brawley, American Society of Golf Course Architects
Gary Brawley Golf Design • PO Box 6483 Peoria, Arizona USA 85385 • P: (602) 617-0038 • Email: gary@gbgolfdesign.com

Rich Ferrero, American Society of Landscape Architects
in2IT Studio • 2040 S. Alma School Rd Suite #1-408 • P: (888) 710-1770 • Email: rferrero@in2itstudio.com

HOLE
18
Par 4



Remove existing sand and liner. Reshape bunker per shaping plan to remove resemblance of existing bunker. Sod limit of disturbance.

Remove existing sand and liner. Reshape bunker per shaping plan to remove resemblance of existing bunker. Sod limit of disturbance.

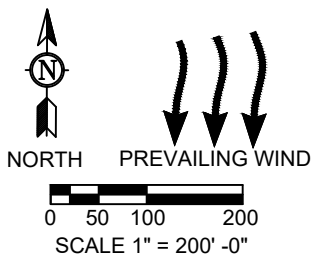
Remove existing sand and liner. Reshape bunker per shaping plan to remove resemblance of existing bunker. Sod limit of disturbance.

Remove existing sand and liner. Reshape bunker per shaping plan to remove resemblance of existing bunker. Sod limit of disturbance.

Establish targets for short game bunker practice (TBD). Remove existing sand and liner. Re-establish bunker core. Install new drainage, liner and bunker sand.

Remove existing sand and liner. Reshape bunker per shaping plan to remove resemblance of existing bunker. Sod limit of disturbance.

Bunker creates a safety concern with other golfers using this green. Remove existing sand and liner. Reshape bunker per shaping plan to remove resemblance of existing bunker. Sod limit of disturbance.



GOLF COURSE MASTER PLAN

Version 2.0 • June 11, 2025

Gary Brawley, American Society of Golf Course Architects
Gary Brawley Golf Design • PO Box 6483 Peoria, Arizona USA 85385 • P: (602) 617-0038 • Email: gary@gbgolfdesign.com

Rich Ferrero, American Society of Landscape Architects
in2it Studio • 2040 S. Alma School Rd Suite #1-408 • P: (888) 710-1770 • Email: rferrero@in2itstudio.com

HOLE
PF



Bunker Analysis

HOLE	QUANTITY		BUNKER	EXISTING		PROPOSED	
	EXI	PROP		Area (sq.ft.)	Edge (l.f.)	Area (sq.ft.)	Edge (l.f.)
1	4	3	1A	1,993	200	2,103	173
			1B	2,749	226	2,013	183
			1C	937	111	937	111
			1D	480	78	0	0
2	5	3	2A	817	110	817	110
			2B	2,228	216	0	0
			2C	1,290	143	1,290	138
			2D	543	85	0	0
2	5	3	2E	1,707	185	157	160
			3A	412	73	0	0
			3B	1,926	204	0	0
			3C	2,783	268	2,783	268
3	9	3	3D	440	76	0	0
			3E	3,759	287	3,759	287
			3F	427	74	0	0
			3G	229	55	1,388	163
			3H	552	84	0	0
			3I	2,903	261	0	0
			4	2	2	4A	5,687
			4B	1,556	176	1,607	157
5	1	1	5A	1,819	181	1,498	154
6	9	5	6A	4,455	296	0	0
			6B	2,064	178	2,064	178
			6C	411	74	0	0
			6D	1,150	149	1,150	149
			6E	1,682	202	915	128
			6F	1,907	192	1,931	179
			6G	424	74	0	0
			6H	798	106	798	106
7	5	3	6I	521	84	0	0
			7A	1,386	165	0	0
			7B	405	73	800	103
			7C	3,626	293	3,626	293
				0	0	0	0
			7D	320	64	0	0
			7E	1,348	166	0	0

Gary Brawley, American Society of Golf Course Architects

Gary Brawley Golf Design • Phone: 602.617.0038 • PO Box 6483 Peoria, AZ USA 85385

Version 2.0 • 6/11/2025 • 1 of 3



Bunker Analysis

HOLE	QUANTITY		BUNKER	EXISTING		PROPOSED	
	EXI	PROP		Area (sq.ft.)	Edge (l.f.)	Area (sq.ft.)	Edge (l.f.)
8	5	2	8A	1,204	131	0	0
			8B	200	51	0	0
			8C	2,334	193	0	0
			8D	405	73	1,175	150
			8E	598	88	598	88
9	2	2	9A	3,732	283	2,919	233
			9B	381	71	650	93
10	4	4	10A	2,772	257	2,772	257
			10B	1,045	119	0	0
			10C	777	101	777	101
			10D	4,867	444	725	103
						1,220	143
11	9	6	11A	3,752	323	2,851	277
			11B	1,134	153	1,134	153
			11C	1,159	132	0	0
			11D	1,142	151	0	0
			11E	3,006	281	603	90
						1,525	153
			11F	1,028	156	0	0
			11G	2,290	238	2,290	238
			11H	1,683	199	1,695	155
			11I	659	93	0	0
12	4	2	12A	2,595	256	1,670	164
			12B	498	83	498	83
			12C	665	99	0	0
			12D	870	111	0	0
13	6	3	13A	1,002	135	1,661	167
			13B	2,012	189	2,888	225
			13C	504	84	0	0
			13D	1,319	162	0	0
			13E	1,106	141	0	0
			13F	1,632	184	1,029	125

Gary Brawley, American Society of Golf Course Architects

Gary Brawley Golf Design • Phone: 602.617.0038 • PO Box 6483 Peoria, AZ USA 85385

Version 2.0 • 6/11/2025 • 2 of 3



Bunker Analysis

HOLE	QUANTITY		BUNKER	EXISTING		PROPOSED	
	EXI	PROP		Area (sq.ft.)	Edge (l.f.)	Area (sq.ft.)	Edge (l.f.)
14	5	4	14A	2,425	237	0	0
			14B	1,067	143	2,450	232
			14C	2,289	241	0	0
			14D	1,081	147	1,515	150
			14E	2,761	281	1,151	139
15	5	4	15A	1,119	139	1,137	124
			15B	3,795	313	3,795	313
			15C	1,254	135	0	0
			15D	1,361	142	1,378	136
			15E	2,286	220	1,363	145
16	2	2	16A	1,034	135	1,034	122
			16B	581	88	581	88
17	3	2	17A	975	127	975	127
			17B	2,554	249	1,148	134
			17C	1,141	145	0	0
18	2	2	18A	820	123	820	123
			18B	1,887	197	1,887	197
PF	7	1	PFA	432	104	0	0
			PFB	215	62	0	0
			PFB	409	85	0	0
			PFD	442	96	0	0
			PFE	425	102	0	0
			PFF	1,650	159	1,650	159
			PFG	2,865	282	0	0
FRONT	42	24		64,588	6,442	40,665	3,947
BACK	40	29		65,947	7,153	43,390	4,570
PF	7	1		6,438	890	1,650	159
TOTAL	89	54		136,973	14,485	85,705	8,676

61%

63%

60%

Gary Brawley, American Society of Golf Course Architects

Gary Brawley Golf Design • Phone: 602.617.0038 • PO Box 6483 Peoria, AZ USA 85385

Version 2.0 • 6/11/2025 • 3 of 3